



Built-in sun protection is an added benefit, but if your cosmetics don't include it, apply a sunscreen with an SPF of 15 *before* putting on your makeup.

On the lips Try a gloss in a soft shade of brown or burgundy. But stay away from true reds and dark lip liners, which can appear garish and overpowering on dark skin. Pro picks include Clarins Lip Colour Glaze in Cosmic Bronze (\$16; clarinsusa.com) or Calvin Klein Lip Gloss in Apricot Glaze (\$17; 800-715-4023).

Elizabeth Graves is a free-lance beauty writer in New York.

Get a glow: Give dark skin radiance by applying makeup in rich burgundy, plum and peach.

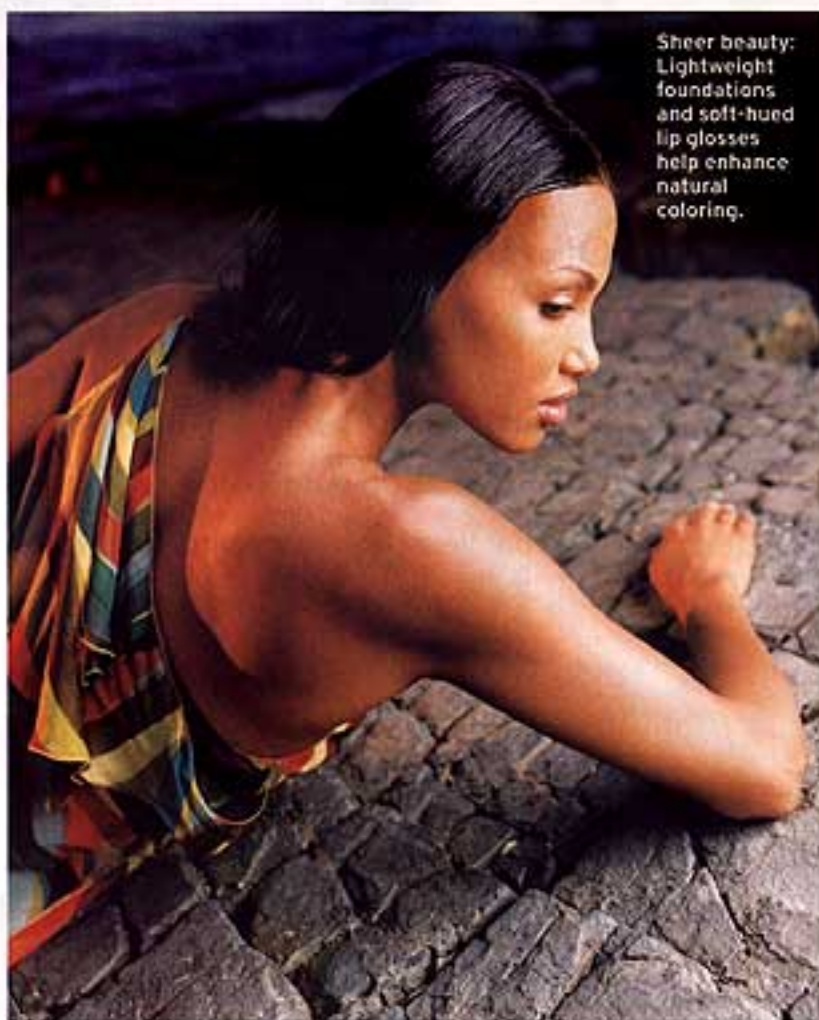
mer months." Opt for Chanel Glossimer in Spark (\$22.50; 800-550-0005) or Origins Lasting Lip Color in Frosted Kiss (\$12; origins.com).

Your skin: dark or African-American

The general rule for this skin tone is if you're going to use a foundation, use a sheer one for summer. Best bets to try include Real Cosmetics Foundation (\$28; 800-265-0015) or Clarins Bronzing Powder Duo (\$28; clarinsusa.com).

On the eyes Cream eye shadows and blushes blend well and look the most natural, says Abreu, who suggests applying warm bronzes, plums, mauves and light gold and silver shadows on summertime eyes. Opt for L'Oréal Colour Fresco Refreshing Crème Eye Shadow in Silver Bells (\$6.50; lorealparis.com) or qiora Face Brightener in Brown (\$20; 866-BEQIORA).

On the cheeks Add a shimmery bronzer for a boost of color on the cheeks. If your skin is more caramel-colored, try a soft peach blush, which warms up skin and looks incredibly natural, Sweeting adds. The darkest skin can be instantly revved up by a mauve cheek color or a berry-colored cheek stain. Use Hard Candy Stain for Lip & Cheek in Punch (\$18; hardcandy.com) or Revlon Summer Skin Sun-Blush (\$8.50; at drugstores).



Sheer beauty: Lightweight foundations and soft-hued lip glosses help enhance natural coloring.